

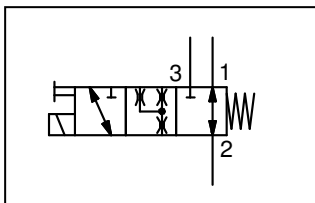


## 3/2 DIRECTIONAL VALVE

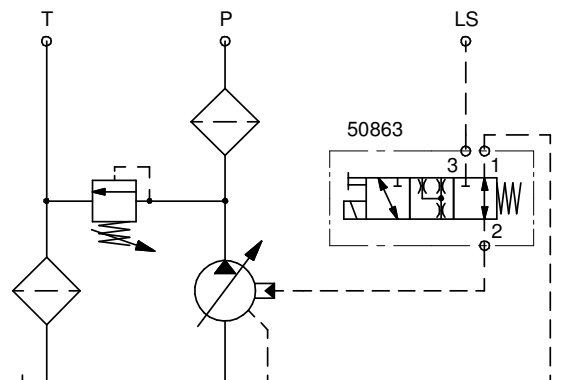


**3/2 Directional Valve** is used as an unloading valve for the LS-line in a load-sensing system with a variable displacement pump.

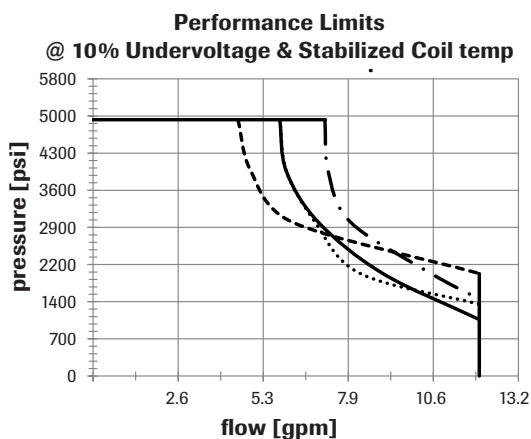
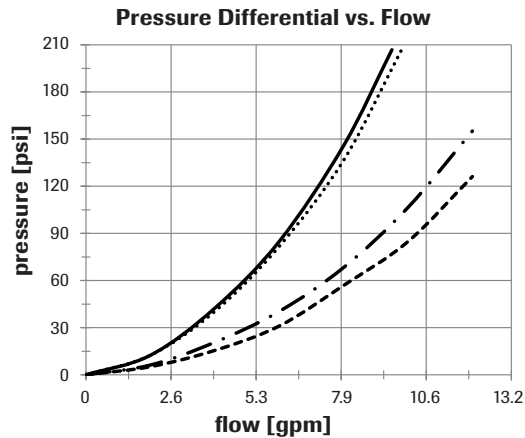
When assembling a variable displacement pump on a coupling independent power take-off (engine power take-off) where the pump is running constantly, the pump signal line must be relieved to tank when the pump is not used. This is to prevent pressure build-up in the signal line causing the pump to angle out and start working (pump oil).



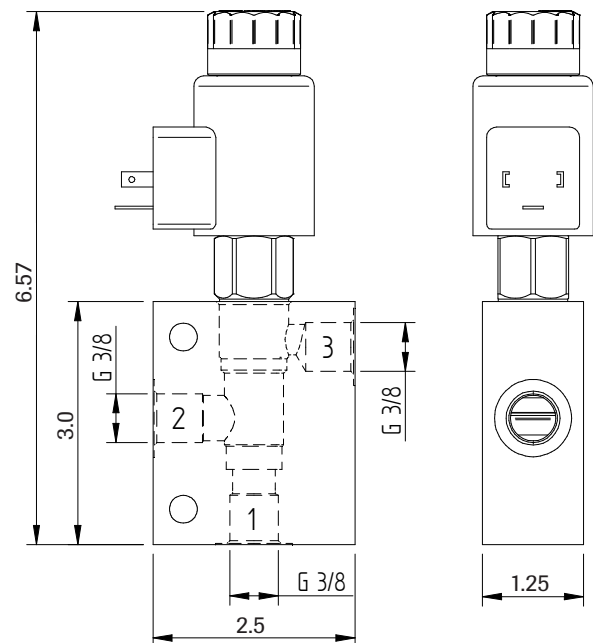
3-way, 2-position, solenoid-operated directional spool valve with manual override.



Port 1: Hydraulic tank  
Port 2: LS-port of the pump controller  
Port 3: LS-signal from the system



## Dimensions



## DIRECTIONAL VALVE ART NO. 50863

### Technical Data Valve

Capacity	12 gmp
Maximum Operating Pressure	5000 psi
Maximum Valve Leakage at 24 cSt	5 in <sup>3</sup> /min @ 3000 psi
Response Time - Typical	50 ms
Switching Frequency	15000 cycles/hr
Valve Installation Torque	30-35 lb-ft

### Technical Data Coil

Maximum Ambient Temperature	122 °F
Maximum Coil Temperature at 20°C Ambient	218 °F
Power Consumption (cold) at rated voltage	22 watts
Voltage	24 VDC
Operating Voltage Range	+/- 10% nominal
Duty cycle Rating	100 %
Connector	ISO/DIN 43650A, Form A (Hirschman)
Protection class	IP65/IP67

### Technical Data Body

Port Sizes	ISO-G 3/8"
Body Pressure Rating	5800 psi

Sunfab reserves the right to make changes in design and dimensions without notice. Printing and typesetting errors reserved.

© Copyright 2015 Sunfab Hydraulics AB. All Rights Reserved.