



Instruction manual

Thank you for choosing Sunfab

You have chosen the SCPD 56/26, a two-flow pump which, thanks to its large speed range, is suitable for several different areas of use. Compact design and easy installation makes the SCPD 56/26 one of the most important components of a powerful and trouble-free hydraulic system. It is speed optimised and therefore delivered in execution with the left (L) or right (R) direction of rotation.

Remember

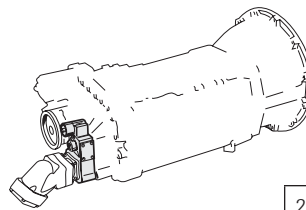
A trouble-free hydraulic system is created using selected components and correct installation. Consequently, follow the instructions in this manual, which includes checking the power take off, tank design, hose dimensions, installation and start up. Failure to carry out the manufacturer's installation conditions will invalidate the warranty.

Installation requirements

Power Take-Off

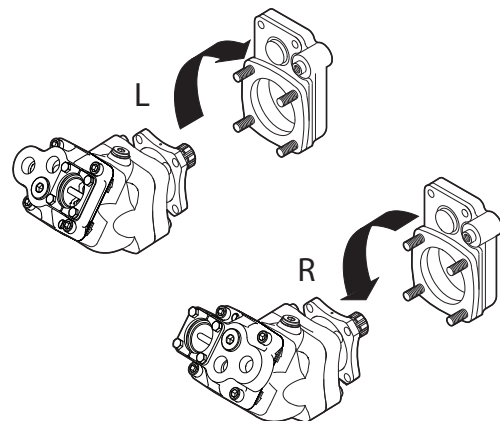
- Pump mounting: Spline shaft DIN 5462 / ISO 14. Mounting flange ISO 7653-D.
- It must be possible to disengage the power take off to prevent overspeed when the hydraulic system is not in use.
- The output speed of the power take off must not exceed the pump's max speed.
- The permitted torque output on the power take off must be higher than the pump's shaft torque at maximum pressure.
- The power take off's direction of rotation must correspond with the selected pump, which is supplied in left-hand (L) or right-hand (R) designs.

NOTE! The cover must not be turned to change the direction of rotation.



THEORETICAL VALUES

200/200 bar	$178 + 83 = 261 \text{ Nm}$
300/300 bar	$267 + 124 = 391 \text{ Nm}$
400/400 bar	$356 + 165 = 521 \text{ Nm}$





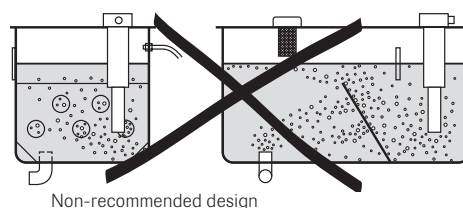
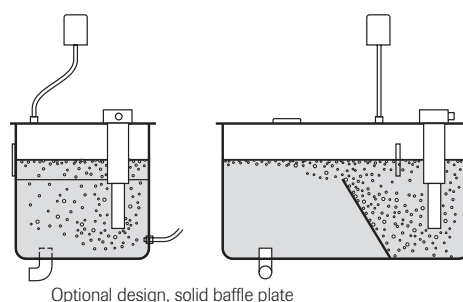
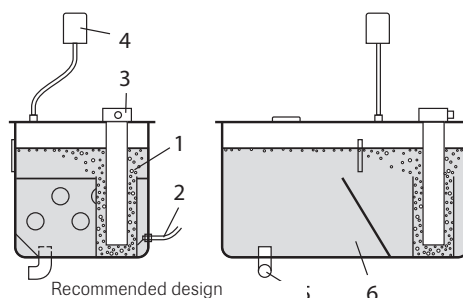
Installation requirements (Continued)

Oil tank

The design of the tank is important so that air bubbles are not drawn into the pump and on into the system. Here are two recommended designs:

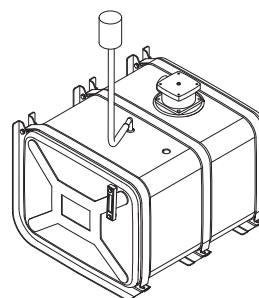
1. Air bubbles from the return oil are guided by the oil flow up to the oil surface (venting area) via an oil pipe mounted at the bottom of the tank. Another option, yet not as reliable, is a tank with a solid baffle plate as shown in the middle picture.
2. Eventual drainage hoses is connected close to the bottom, as far as possible from the suction connection.
3. Large return filter corresponding to 4 x the pump flow.
4. Separate air filter, which is fitted protected from water and dirt.
5. Suction connection close to or in the bottom of the tank on the opposite side to the return filter.
6. The net volume of the tank should be at least 1.5 x the pump flow and positioned so that the oil level lies above the pump.

A traditional tank fitted with a baffle plate with holes is not recommended as this does not deaerate the oil satisfactorily.



Pressure relief valves

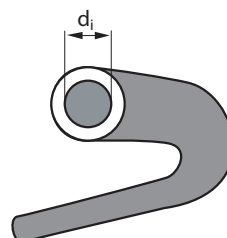
The hydraulic system must be equipped with a pressure relief valve for each circuit if the flow is used for different functions. On removable equipment with quick connectors the pressure limiting valve must be installed before the quick connector.



Recommended line size (d_i)

All dimensions, internal diameter

Max flow	120 lit/min	160 lit/min
Max speed	1 470 rpm	1 850 rpm
Suction hose	50 mm (2")	64 mm (2½")
Shut off valve	50 mm (2")	64 mm (2½")
Return hose	32 mm (1¼")	38 mm (1½")
Pressure hose	19 mm (¾")	19 mm (¾")



If the suction line is more than 2 m long the internal diameter must be increased by 10 mm for each meter extension.



Installation requirements (Continued)

Hydraulic oils

Quality:

- Mineral oil
Use a high quality oil whose technical properties conform, as a minimum, to the following requirements: ISO type HM VG 32-68 depending on the ambient air temperature. Alternatively DIN 51524-2 HLP.
- Environment oil
Use synthetic ester that conforms to the same technical requirements as the standards above.

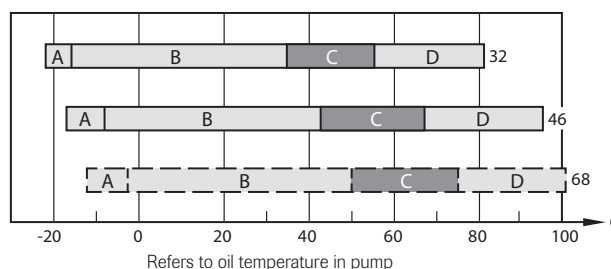
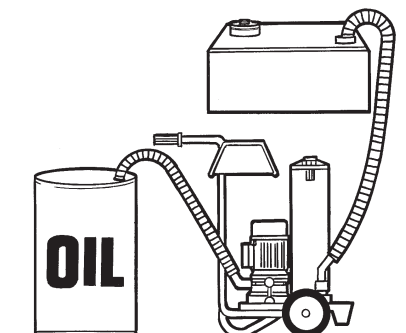
Oil filling - Oil changing:

- New hydraulic oil has a too high impurity level. Filling should therefore be done with the help of a filter unit or through the oil tank's return filter.
- Do not mix oil of a different quality, viscosity or brand. This will impair the technical properties of the oil.

Viscosity:

The viscosity of the hydraulic oil drops (the oil becomes thinner) when the temperature rises. An ideal choice is an oil with a high viscosity index (VI). A higher VI gives less viscosity variation when the temperature changes. Recommended VI = 150 or higher.

- At a viscosity higher than 1500 cSt (limit for cold start) the pump cannot suck in the oil.
- At a viscosity lower than 10 cSt the lubrication capacity is insufficient. System efficiency will also be impaired.
- An oil cooler must be used, when there is a risk for the oil temperature in tank to exceed 60 °C.



E.g. Hydraulic oil 32: The designation "32" denotes the viscosity is 32 cSt at 40 °C. Lowest start temperature is -23 °C and highest working temperature 82 °C. Ideal working temperature is 35 - 55 °C.

- A** = The hydraulic system can be started but not loaded. Only circulation pumping at idling speed 1500-700 cSt.
- B** = The system can be loaded 700-40 cSt.
- C** = Ideal working range 40-20 cSt.
- D** = Highest recommended operating temperature 20-10 cSt.

NOTE! The diagram concerns hydraulic oil with viscosity index VI ≈ 180



Installation requirements (Continued)

Filtering

To invest in cleanliness is worthwhile:

- Halving the amount of particles doubles component life.
- Halving the amount of particles reduces the degree of malfunction by half.

To conform to most market demands on operating reliability and life span the impurity level of the oil should correspond to class 18/16/13 as set out in ISO 4406.

Consequently, the hydraulic system is equipped with a return filter and air filter with a degree of filtration equal to 10 μm absolute.

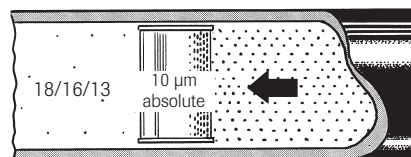
Furthermore, the hydraulic system should be equipped with pressure filter if necessary.

Changing the filter:

First change after 50 hours of operation. Then whenever the filter pressure indicates a too high pressure at the normal operating temperature for hydraulic oil.

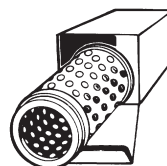
A good rule is to change the air filter at the same time.

Contamination level 18/16/13



Max 64,000 particles > 5 μm /100 ml.

Max 8,000 particles > 15 μm /100 ml.



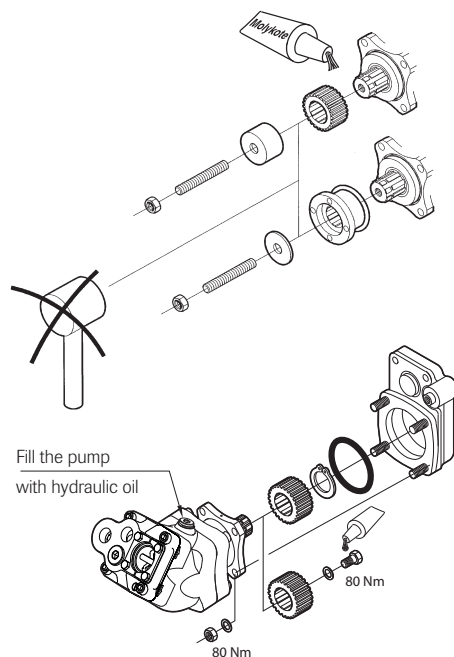
After changing the filter, run with the lowest possible flow for at least 5 minutes to ensure the filter functions.



Installation

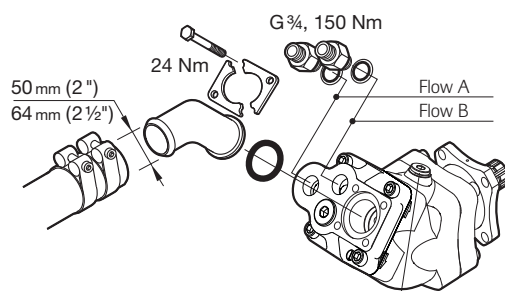
Pump installation

Lubricate the splined shaft before installation using assembly paste intended for spline joints, e.g. Molykote G Rapid plus, or the like. Do not hit the gear wheel/drive disc. Use an M12 stud bolt and sleeve when assembling the gear wheel. Use an M12 stud bolt and washer when assembling the drive disc. Secure the gear wheel using a circlip or M12 bolt and locking fluid. Secure the O-ring and fit the pump on the power take-off. The manufacturer of the power take-off may have different requirements.



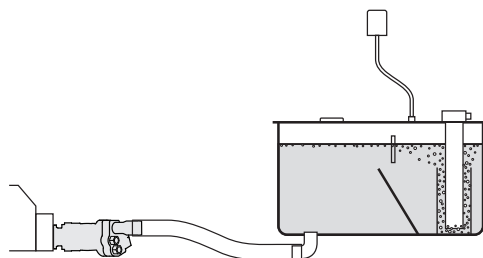
Connections

Secure the O-ring and tighten the suction connection bolts crosswise. Tighten the hose using two heavy-duty hose clips. Use pressure connections with flat seals against the pump for optimal strength. Do not use connections with tapered threads.



Tank location and hose routing

The tank should be positioned as high and as close to the pump as possible in order to create good suction conditions for the pump. The suction pipe must be routed so that air pockets cannot form to prevent cavitation and noise. SCPD 56/26 is internally drained.



The pump can be installed in 4 positions with the angle upwards, downwards or to the side. When the angle is to the side it is an advantage if the pump can be twisted so that the suction connection is highest.

Start up

Start and run the pump unloaded at idling speed and allow the hydraulic oil to circulate through the hydraulic system for at least five minutes before the system's functionality is tested.



Rectifying a malfunctioning hydraulic system

Fault	Troubleshooting	Cause	Action
The equipment works jerkily.	Check whether the flow in the pressure hose from the pump pulsates. Oil spots on the pump and suction hose can indicate an air leakage. Check the oil level in the tank. Check whether the oil foams.	1. Pump not vented after installation. 2. Air leakage on the suction hose or pump. 3. Oil level too low. 4. Not optimal designed tank for separation of air from the oil. 5. Oil tank with too small air venting area.	1. Vent the pump. 2. Repair the air leakage. 3. Fill with oil. 4. Replace the return filter with an oil pipe or tank with solid baffle plate. 5. Change to a tank with a greater air venting area.
The equipment works jerkily when starting and at a high pump speed.	Check whether the pump cavitates. This is noticeable through flow pulsations and noise from the pump stopping when the speed is lowered.	1. Too small diameter on the suction hose. 2. Crushing or restriction of the suction hose. 3. Oil too thick. 4. Underpressure in the oil tank.	1. Change to a suction hose with a larger diameter. 2. Remove the restriction. 3. Change to an oil with a lower viscosity. 4. Change the air filter.
The oil has an abnormally high temperature.	Run the pump unloaded at working speed and measure the counter pressure. Connect a pressure gauge to the pressure hose close to the pump. The pressure must not exceed 2 MPa. Check whether the pressure rises to the correct value when a function is run towards the stop.	1. Too small a diameter or restriction in the pressure or return hoses. 2. Clogged pressure or return filter. 3. Oil flow too great. 4. Pressure relief valve tripped at too low a pressure. 5. Oil too thin. 6. Oil tank too small. 7. Oil level too low. 8. High continuous power output.	1. Change to hoses with a larger diameter; rectify the restriction. 2. Replace the filter. 3. Lower the speed or change to a smaller pump. 4. Adjust the valve or replace if necessary. 5. Change to an oil with a higher viscosity. 6. Change to a larger oil tank. 7. Fill with oil. 8. Fit an oil cooler.
The equipment has a lack of power.	Check whether the pressure rises to the correct value when a function is run towards the stop.	1. Pressure relief valve tripped at too low a pressure. 2. Defective directional control valve.	1. Adjust the valve or replace if necessary. 2. Replace the directional control valve.
The equipment runs abnormally slowly when loaded.	Connect a flow meter close to the pump. Check the flow. 1. The correct flow is obtained when loaded. 2. Abnormally low flow obtained when loaded.	1. Pressure relief valve tripped at too low a pressure. 2. Worn pump.	1. Adjust the valve or replace if necessary. 2. Replace the pump.
Noise from the pump.	1-5. Check whether the pump cavitates. This is indicated by the noise stopping when the speed drops. Check whether the noise propagates in the hydraulic system. 6. Check whether the noise can be heard at all speeds.	1. Too small diameter on the suction hose. 2. Crushing or restriction of the suction hose. 3. Oil too thick. 4. Underpressure in the oil tank. 5. Worn pump.	1. Change to a suction hose with a larger diameter. 2. Remove the restriction. 3. Change to an oil with a lower viscosity. 4. Change the air filter. 5. Replace the pump.
Oil leakage from the pump.	Localise the oil leakage.	1. Leakage from the suction connection. 2. Leakage from the shaft seal. 3. Leakage from the plugs/fittings.	1. Replace the O-rings and tighten the hose clips. 2. Replace the shaft seals. 3. Replace the plugs/fittings and tighten carefully (15 Nm).
The pump shakes (intermediate shaft assembly).	Check whether the pump shakes, despite the flow not pulsating, i.e. the attachment does not jerk.	1. Play on intermediate shaft. 2. Incorrect joint angle on intermediate shaft. 3. Imbalance on intermediate shaft. 4. The universal joints are not in line with each other.	1. Replace the intermediate shaft. 2. Ensure that the spindle on the power take off and pump shaft are parallel. 3. Rectify the intermediate shaft. 4. Loosen and turn the spline coupling so that the universal joints are aligned with each other.



If oil leakage has occurred via a damaged shaft seal, ensure that no hydraulic oil has entered the gearbox!



Technical data SCPD 56/26 DIN

Theoretical oil flow, A+B at pump speed				
rpm		l/min		
	600	34+16=50		
	1000	56+26=82		
	1200	67+31=98		
	1500	84+39=123		
	1800	101+47=148		
Displacement				
cm³/rev	56.0+26.1			
Max pump speed				
rpm	1850			
Max working pressure				
bar	400			
Weight				
kg	18.0			
Tare-weight torque (M)				
Nm	21.0			
Theoretical power at pressure and pump speed				
rpm		200 Bar	300 Bar	400 Bar
	600	11.2+5.2=16.4 kW	16.8+7.8=24.6 kW	22.4+10.4=32.8 kW
	1200	22.4+10.4=32.8 kW	33.6+15.6=49.2 kW	44.8+20.8=65.6 kW
	1800	33.6+15.6=49.2 kW	50.4+23.4=73.8 kW	67.2+31.2=98.4 kW
Nominal torque on pump shaft at different pressures				
		200 Bar	300 Bar	400 Bar
		178+83=261 Nm	267+124=391 Nm	356+165=521 Nm
Direction of rotation				
Left (L) or Right (R)				

**WARNING**

When the pump is running:

1. Do not touch the pressure hose
2. Watch out for rotating parts
3. The pump and hoses may be hot

Sunfab reserves the right to make changes in design and dimensions without notice. Printing and typesetting errors reserved.
© Copyright 2015 Sunfab Hydraulics AB. All Rights Reserved.