



**SLPD 20/20-64/32 DIN is a series of in-line dual flow pumps with extremely low noise levels for demanding mobile hydraulics.**

SLPD 20/20-64/32 DIN comes in eight different sizes, where three models feature differentiated flows. Pumps with differentiated flow increase the field of application as they can provide three different flows: one small, one large and one combined flow. Maximum pressure is 330-350 bar depending on the model. Its slim pump housing makes direct mounting on the power take-off possible in very confined areas. SLPD 20/20-64/32 DIN is also ideal for installation using a frame bracket via an intermediate shaft. It is available in a version with a Savtec valve for applications where the hydraulics need to be used while the vehicle is on the move.

#### **Option for conversion to single-flow pump**

For applications where the SLPD is intended to be used as a single-flow pump, Sunfab offers a solution that can be purchased as a separate accessory.

By replacing the pump's existing banjo bolt and T-connection with a specially designed banjo bolt, a single pressure port is obtained on the pump instead of the previous two connections.

The banjo bolt is ordered separately with a sealing washer, and the customer converts the existing SLPD pump into a single-flow pump.

#### **Other advantages:**

- Independent direction of rotation
- A cost effective total solution in relation to a conventional installation using two pumps with a splitter gear box
- Smooth operation over the entire speed range
- Long life due to high demands on material selection, such as bearings, seals, etc.
- O-rings on all contact surfaces as well as double shaft seals eliminate oil leakage from the pump and power takeoff.
- Extremely low noise emission over entire speed and pressure ranges

## Versions, main data

Example

SL	PD	-	46/46	W	-	N	-	DL4	-	L35	-	S4	S
Line	1		2	3		4		5		6		7	8

Line

SL	Sunfab In-Line
----	----------------

1. Type

P	
---	--

2. Displacement

20/20	28/28	40/20	35/35	56/28	46/46	53/53	64/32
-------	-------	-------	-------	-------	-------	-------	-------

3. Direction of rotation

W	Independent
---	-------------

4. Shaft seal

N	Nitrile
V*	FPM

\*Can withstand higher temperature, e.g. on engine PTO.

5. Mounting flange

DL4	DIN 4-h (ISO 7653D)
-----	---------------------

6. Shaft

L35	DIN 5462 / ISO 14
-----	-------------------

7. Connection cover

S4	Sunfab standard SLPD
----	----------------------

8. Connections

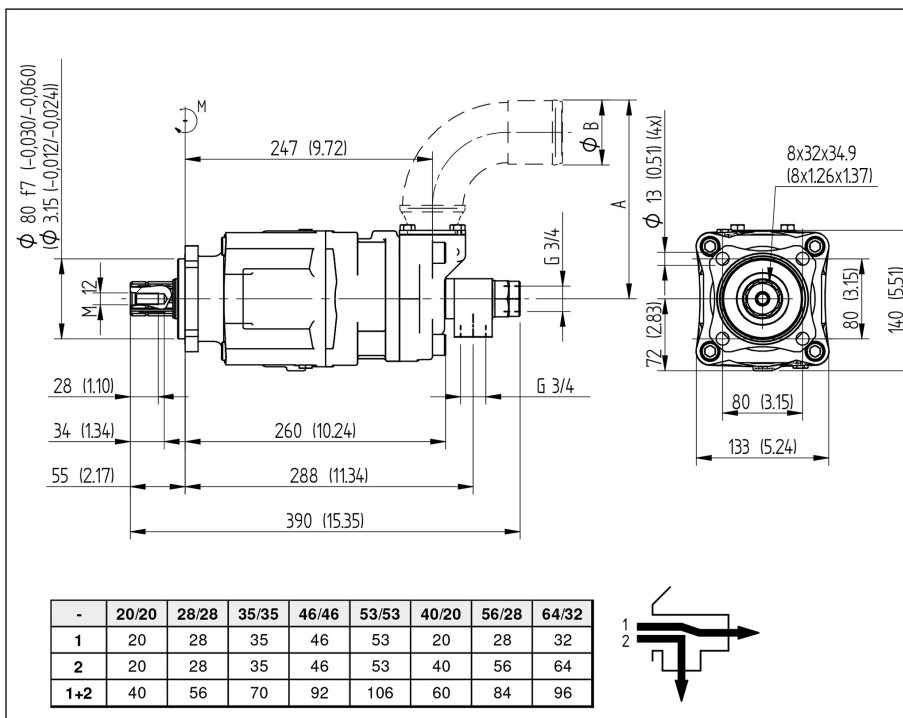
S	Sunfab standard
---	-----------------

SLPD 20/20-64/32 DIN		20/20	28/28	40/20	35/35	56/28	46/46	53/53	64/32
<b>Theoretical oil flow l/min at pump speed</b>									
rpm	500	10+10=20	14+14=28	20+10=30	17+17=34	27+14=41	23+23=46	26+26=52	32+16=48
	1000	20+20=40	28+28=56	41+20=61	34+34=68	55+28=83	46+46=92	53+53=106	63+32=95
	1500	31+31=62	41+41=82	61+31=92	51+51=102	82+41=123	69+69=138	79+79=158	95+47=142
<b>Displacement</b>									
cm <sup>3</sup> /rev		20.4+20.4	27.5+27.5	40.7+20.4	33.9+33.9	54.9+27.5	45.8+45.8	52.6+52.6	63.1+31.5
<b>Max pump speed</b>									
rpm		2200	1800	2200	2200	1800	1800	1600	1600
<b>Max working pressure</b>									
bar		350	350	350	330	350	330	330	350
<b>Weight</b>									
kg		22.0	22.0	22.0	22.0	22.0	22.0	22.0	22.0
<b>Tare-weight torque (M)</b>									
Nm		26.5	26.5	26.5	26.5	26.5	26.5	26.5	26.5
<b>Direction of rotation</b>									
Independent									

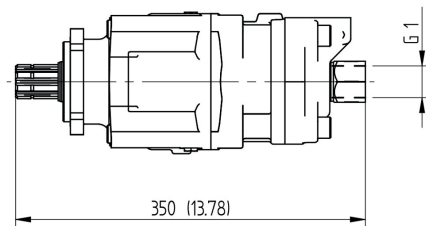
Maximum pressure combined with maximum speed is only allowed during intermittent operation (max. 6 sec/min)

## Dimensions SLPD 20/20-64/32 DIN

Millimeter (inches)



### OPTION SINGLE FLOW CONVERSION



### 51037 Kit



Tightening Torques:  
150 ±10 Nm

	20/20	28/28	40/20	35/35	56/28	46/46	53/53	64/32
A	133 (5.24)	133 (5.24)	133 (5.24)	133 (5.24)	166 (6.54)	166 (6.54)	166 (6.54)	166 (6.54)
B	50 (2.0)	50 (2.0)	50 (2.0)	50 (2.0)	64 (2.5)	64 (2.5)	64 (2.5)	64 (2.5)



## WARNING!

When the pump is running:

1. Do not touch the pressure hose
2. Watch out for rotating parts
3. The pump and hoses may be hot

Sunfab reserves the right to make changes in design and dimensions without notice. Printing errors reserved.

© Copyright Sunfab Hydraulics AB. All Rights Reserved.